



SPRING SEED BROCHURE 2022





CONTENTS

Spring 2022	2
About us	3
Crop trials	4
Drill dates and seed rates / Mortimers commercial cleaning	5
Planning for spring malting barley	6-7
Barley	8-17
Wheat	18-22
Oats	23
Beans	24-25
Seed dressings	26-31
Game cover mixtures	31-36
Fertilisers	36
Useful contacts	37

SPRING 2022

Autumn in the seed plant was a great success and unlike the past 2 years, the weather has been favourable and autumn planting has gone very well.

In the warehouse, our team have come together brilliantly, with Chris Johnson leading the overall seed production process and Dan Wood and Andrew Cressey focusing on stock management and haulage out. Combined with an amazing effort from our permanent and part time drivers, we achieved our most successful year yet. We soon got to grips with the new equipment, and the optical sorter in particular had an incredible impact on quality. We are now using the optical sorter for commercial cleaning – removing ergot from milling wheat, which is an exciting new step. Do get in touch and we will see if we can help.

Our attention now turns to the Spring season, and as usual we are processing both certified and farm saved seed. With high nitrogen prices, some farmers are looking for crops with lower nitrogen requirements this year and spring malting barley is a consideration. Laureate will still be the most popular variety on farm this year, due to its consistent performance year on year. SY Tungsten is a new variety also from Syngenta which is also worth considering as it now has provisional approval for both distilling and brewing.

In terms of feed / low grade brewing varieties, RGT Planet will again be very popular this year, but here at Mortimers we are still supporting KWS Irina (being one of only 3 suppliers nationwide), which has an incredible following because of its excellent standing ability, straw quality and bold grain. For those growers looking for an alternative option for this sector in the market, the new variety from Syngenta, SY Splendor is worth considering.

Pulses have been popular as an alternative break crop over the past few years and this trend will continue this spring, due to the lower fertiliser requirements of both beans and peas. Fuego and Lynx are still the most popular bean varieties for the human consumption market and we have good availability of seed.

We look forward to seeing you at YAMS on Wednesday 2 February 2022 or, later in the year at our trials which we are repeating after a very successful first year, but for now, thank you for your loyalty and support, and we wish you well for the 2022 season.

From all at Mortimers

ABOUT US

Mortimers are independent grain, seed and fertiliser merchants in Driffield, East Yorkshire, who produce the highest quality seed at their new production facility. The state of the art plant, built in 2014, has been further enhanced in 2021, with the installation of a new larger treater, a precleaner and an optical (colour) sorter. This ensures the best possible cleaning and accurate chemical application of all cereals and pulses, and Mortimers offer a service for both certified and farm saved seed.

FARM SAVED SEED

Included in the farm saved seed service is an option to haul your tonnage to and from our plant. Alternatively, we can arrange for your grain to be collected and brought back to farm. We can also test seed for germination and TGW. If a Glyphosate type product has been used, a full grow-on test would be required. Collection of any BSPB royalty is typically undertaken by us and paid over on your behalf. Alternatively, you are free to pay royalty on a hectare basis. Full guidance is available on request.

We have our own on site weighbridge: farm saved seed will be weighed in and screenings will be credited with their feed value at the time of delivery. Our emphasis is on quality when cleaning and treating your farm saved seed. Our Cimbria seed cleaning equipment and optical sorter ensures the seed is cleaned to the highest standard, and accurate chemical application through the Bayer Evolution seed treatment applicator, results in the best possible start to your crop.

CERTIFIED SEED

Certified Seed will be selected from one of our own local quality growers. Our staff regularly inspect the growing crops to ensure they are grown to the highest standard and in the best possible conditions. Once harvested, we undertake full germination, purity and screening tests on all lots. During intake, the seed is checked again before it is allowed to tip in the plant. Once cleaned, a representative sample is taken to an Official Seed Testing Station for a germination and purity test.

MORTIMERS CROP TRIALS 2022

After the success of last year, we are having our own independent crop trials again, very kindly hosted on one of our customer's farms, close to Driffield on the Yorkshire Wolds. We have drilled a wide range of winter barley and wheat varieties, both new and existing. The trials are on a farm scale, to give our customers a realistic

view for future selection. Please let your farm representative know if you would like to look around the trials at any point.

We look forward to holding several trial afternoons and evenings in summer 2022.



Some of the varieties at the trials include:

BARLEY'S:

Malting: Craft, SY Vessel

2-Row Feed: KWS Tardis, Valerie, KWS Hawking, KWS Orwell, KWS Cassia, LG Dazzle, LG Caiman, KWS Ferris

Hybrid: SY Kingsbarn, Bazooka, SY Canyon

WHEATS:

Group 1: Skyfall, Crusoe, KWS Zyatt

Group 2: KWS Extase, KWS Siskin, KWS Palladium

Group 3 Soft: KWS Firefly, LG Astronomer, LG Illuminate

Group 4 Soft: LG Skyscraper, RGT Saki, LG Spotlight, RGT Bairstow

Group 4 Hard: KWS Dawsum, Champion, KWS Cranium, Gleam, Graham, Costello, Theodore, LG Typhoon

DRILLING DATE AND SEED RATES:

Whilst waiting for the right conditions is often more important than exact drilling date for spring crops, optimal drilling dates and seed rates are key for rapid establishment and final yields.

Below is a guide to drilling date and seed rates:

	Mid Nov-Late Jan (seeds/m ²)	Late Jan- Mid March (seeds/ m ²)	Mid March + (seeds/ m ²)
Spring Wheat	400-450	400-450	400-500
Spring Barley	325-350	350-375	350-400
Spring Oats		425	450
Spring Beans		45-50	45-50

MORTIMERS COMMERCIAL CLEANING

We have deliberately designed our seed plant enhancements to allow us to also complete fast commercial cleaning of high value crops outside seed season, for example to remove ergot in milling wheat or fusarium in malting barley, if required.

- Ergot and Admix removal
- Bushel weight improvement
- Colour sorting and cleaning of combinable crops
- Added valve by optimising premiums
- Separation of commodities



The Optical (Colour) Sorter

If in future you need to clean up an otherwise valuable crop please get in touch.

PLANNING FOR SPRING MALTING BARLEY IN 2022

In the world of spring malting barley varieties, it is important to grow a mainstream variety that is dependable, whilst also being aware of promising new varieties progressing through testing.

Syngenta has a great track record of bringing leading spring malting barley varieties to the market, and also effective seed treatment technology.

LAUREATE

Despite variable weather being something we increasingly seem to have to contend with in the UK, Laureate once again proved itself in 2021, as it did in 2020.

A dual-purpose variety with Full Approval on the MBC Approved List for harvest 2022 for both malt distilling and brewing, Laureate has become noted for its consistent performance. Going forward, it may also offer export potential, as it is now accepted among some of the world's biggest brewers.

PROMISING NEWCOMER – SY TUNGSTEN

Also from Syngenta, SY Tungsten was promoted during 2021 to Provisional Approval 2 for both malt distilling and brewing on the MBC Approved List for harvest 2022.

A potential partner to Laureate, SY Tungsten has similar quality, while historically producing a slightly higher UK treated yield. Syngenta hopes that summer 2022 will see SY Tungsten progress to Full Approval on the MBC List.

PROMISING NEWCOMER – SY SPLENDOR

Also promoted to Provisional Approval 2 on the MBC Approved List for harvest 2022 – in this case for brewing use – was SY Splendor.

A high-yielding variety, Syngenta technical experts also report that SY Splendor has characteristics that could be useful within a black-grass management strategy – including high tillering capacity for crop competition.

DISEASE CONTROL PLUS ROOTING POWER – VIBRANCE DUO*

With spring barley's short growing season making it important to get the crop off to a strong start, Syngenta has invested a lot of time into developing seed treatment Vibrance Duo in the crop.

As well as controlling important barley diseases, such as covered smut and seed-borne snow mould, Vibrance Duo has delivered improvements in spring barley establishment, early vigour and root growth. Bigger roots are associated with improved scavenging for soil moisture and nutrients.

Across 23 spring malting barley trial sites drilled in 2020 and 2021, Vibrance Duo delivered an extra 0.14 t/ha over alternative seed treatments tested, and a 3:1 return on investment.

* Vibrance Duo cannot be used on barley seed crops grown for certified seed production.

"Laureate has done very well in 2021. For us, in Yorkshire, we malt it for distilling and brewing, so it gives a wide window of acceptance for the farmer."

"SY Tungsten and SY Splendor both have potential. SY Tungsten has similar quality to Laureate. SY Splendor has potential for brewing."

Mark Ineson, Grain Supply Chain Manager, Muntons

Use plant protection products safely. Always read the label and product information before use. For further product information including warning phrases and symbols refer to www.syngenta.co.uk

Vibrance® Duo is a Trademark of a Syngenta Group Company.
Vibrance Duo (MAPP No. 17838) contains fludioxonil and sedaxane.

AHDB Recommended List Spring barley 2022

Market options, yield and grain quality



	Jensen	Skyway	Firefoxx	SY Bronte	Spinner	SY Tungsten
End-use group	Malting varieties					
Scope of recommendation	UK	UK	UK	UK	UK	UK
Variety status	NEW			NEW	NEW	
Fungicide-treated grain yield (% treated control)						
United Kingdom (7.4 t/ha)	105	105	103	103	103	103
East region (7.3 t/ha)	106	106	103	104	103	101
Untreated grain yield (% treated control)						
United Kingdom (7.4 t/ha)	96	94	92	92	96	90
Main market options						
MBC malting approval for brewing use	T	P	-	T	T	P
MBC malting approval for malt distilling use	-	-	P	-	-	P
MBC malting approval for grain distilling use	-	-	-	-	-	-
Grain quality						
Specific weight (kg/hl)	65.9	68.7	66.4	66.8	67.5	67.7
Screenings (% through 2.25 mm)	1.4	1.0	1.4	1.3	1.2	1.7
Screenings (% through 2.5 mm)	3.4	2.6	3.7	3.0	2.9	4.5
Nitrogen content (%)	1.50	1.57	1.54	1.54	1.54	1.50
Agronomic features						
Resistance to lodging without PGR (1–9)	6	7	7	7	7	7
Straw height without PGR (cm)	66	74	69	73	70	71
Ripening (+/-RGT Planet, -ve = earlier)	+1	0	0	+1	+1	+1
Resistance to brackling (1–9)	8	8	8	8	8	8
Disease resistance						
Mildew (1–9)	8	9	9	9	9	8
Brown rust (1–9)	5	4	4	4	5	4
Rhynchosporium (1–9)	[6]	[4]	5	[5]	[4]	3
Breeder/UK contact						
Breeder	Sej	NS	Ack	SyP	Sec	SyP
UK contact	Lim	Agr	ElsAck	Syn	Agr	Syn
Annual treated yield (% control)						
2019 (7.8 t/ha)	105	105	103	104	104	102
2020 (7.5 t/ha)	104	105	102	103	102	103
2021 (7.6 t/ha)	107	104	106	103	104	103
Malting quality						
Hot water extract (l deg/kg)	314.0	314.1	313.4	314.8	313.2	314.4
Status in RL system						
Year first listed	22	21	20	22	22	20
RL status	P1	P2	-	P1	P1	-

LG Diablo	Laureate	SY Splendor	RGT Planet	KWS Sassy	Fairing	Fairway	Malvern	Cadiz	Prospect
						Feed varieties			
UK	UK	UK	UK	UK	Sp	UK	W	E&W	UK
C	C		C			*	NEW		
102	102	102	99	97	93	104	103	103	103
103	102	102	99	95	92	104	103	105	105
92	94	90	90	89	84	91	95	92	93
F	F	P	F	N	-	-	-	-	-
F	F	-	N	F	-	-	-	-	-
-	-	-	N	-	F	-	-	-	-
67.1	66.6	68.1	68.0	68.6	68.1	65.6	66.4	67.6	67.9
1.4	1.3	1.4	1.2	1.0	1.0	1.2	1.3	0.8	1.8
3.3	3.1	3.6	3.1	2.4	2.6	3.1	3.8	1.8	4.2
1.52	1.54	1.55	1.56	-	-	-	[1.55]	1.60	1.59
7	6	7	7	6	8	7	8	7	7
71	69	72	72	77	70	70	71	74	69
+2	+1	+1	0	+1	-2	-1	0	+1	+1
8	8	9	8	6	8	8	8	8	9
9	9	9	8	9	8	9	9	9	9
5	5	3	5	5	4	3	5	5	4
5	5	[4]	5	6	8	[3]	[1]	[2]	[6]
LimEur	SyP	SyP	RAGT	KWS	SyP	NS	NS	NS	Sej
Lim	Syn	Syn	RAGT	KWS	Syn	Sen	AgV	Sen	Sen
102	102	104	100	98	93	104	103	104	104
102	102	102	99	97	91	103	103	102	102
102	104	99	97	96	93	106	104	104	103
314.1	313.8	313.6	313.3	-	[306.3]	[312.5]	308.0	312.5	312.3
18	16	20	15	16	16	20	22	21	20
-	-	-	-	-	-	*	P1	P2	-

SY Tungsten

One of those rare finds
The malting barley that everyone is looking for!



syngenta®

Syngenta UK Ltd. Registered in England No. 849037.
CPC4 Capital Park, Fulbourn, Cambridge CB21 5XE.
Tel: +44 (0) 1223 883400 Technical Enquiries: +44 (0) 800 1696058
Email: customer.services@syngenta.com Website: www.syngenta.co.uk

MALTING / FEED



SY Tungsten (parentage RGT Planet x Ovation) is a new variety added to the AHDB Recommended List in 2020 and gained Provisional Approval 2 in 2021 for both malt distilling and brewing on the MBC Approved List for harvest 2022. It is the highest yielding dual purpose variety for the brewing and malt distilling market, with very strong support from end-users. It has good straw strength with a very good brackling score (8) and lodging resistance. It has a high specific weight of 67.7 kg/hl and an untreated yield of 90%.



LG Diablo (parentage Overture x Sanette) is the highest yielding barley that has full approval in both the malting and brewing sector. It has relatively stiff straw and good brackling resistance. LG Diablo is medium in height, has a good overall disease profile with good resistance to mildew. As well as being a dual use malting variety, LG Diablo also makes an excellent, high yielding feed barley.



Laureate (parentage Sanette x Concerto) remains the most popular spring malting variety with full MBC approval for both malt distilling and brewing. It has very reliable on farm performance. Agronomically, Laureate has a strong disease profile as well as good resistance to lodging and brackling.



RGT Planet (parentage Tamtam x Concerto) is a high yielding variety and is an ideal choice for farmers requiring a bold grain for feeding with good straw quality. RGT Planet has full approval for brewing as well as export potential and will be of interest to growers looking for a combination of very high yields and quality. It is slightly earlier to mature than other varieties.



SY Splendor (parentage Octavia x Dioptric) has been promoted to Provisional Approval 2 on the MBC Approved List for harvest 2022. It has stiff straw and good agronomics as well as a very high grain quality. It has good resistance to lodging and excellent brackling with moderate maturity. A good choice for RGT Planet looking for something new.



KWS Irina (Conchita x Quench) is a very high yielding feed variety which has quality straw and excellent resistance to brackling. It has been a very popular feed variety with high bushel weight and excellent on farm consistency for numerous years.

Spring Barley Varieties we continue to support even though no longer on the AHDB Recommended List

End-use group	Feed Variety
Fungicide-treated grain yield (% treated control) 2019 Data	
United Kingdom (7.6 t/ha)	102
East region (7.8 t/ha)	102
Untreated grain yield (% treated control) 2019 Data	
United Kingdom (7.4 t/ha)	89
Grain quality	
Specific weight (kg/hl)	66
Screenings (% through 2.25 mm)	2
Screenings (% through 2.5 mm)	4
Nitrogen content (%)	
Agronomic features	
Resistance to lodging without PGR (1–9)	8
Straw height without PGR (cm)	69
Ripening (+/-RGT Planet, -ve = earlier)	0
Resistance to brackling (1–9)	9
Disease resistance	
Mildew (1–9)	9
Brown rust (1–9)	5
Rhynchosporium (1–9)	5
Breeder/UK contact	
Breeder	KWS
UK contact	KWS
Annual treated yield (% control)	
2016 (7.6 t/ha)	102
2017 (7.2 t/ha)	101
2018 (6.5 t/ha)	100
Status in RL system	
Years listed on the AHDB recommended list	2014 - 2019

Irina is very popular with farmers as it produces a lot of straw but also stands very well.



KWS IRINA

- High yielding spring malting barley
- Tried, tested and grown across Europe
- Stiffest straw and best brackling score compared with current Recommended varieties



KWS UK LTD
56 Church Street
Thriplow
Royston
SG8 7RE

+44 (0) 1763 207300
@kwsuktd
ukmarketing@kws.com
www.kws-uk.com

**SEEDING
THE FUTURE
SINCE 1856**





LG DIABLO

SPRING MALTING BARLEY

**YIELDS
LIKE
HELL!**

**NOW
DUAL
USE!**



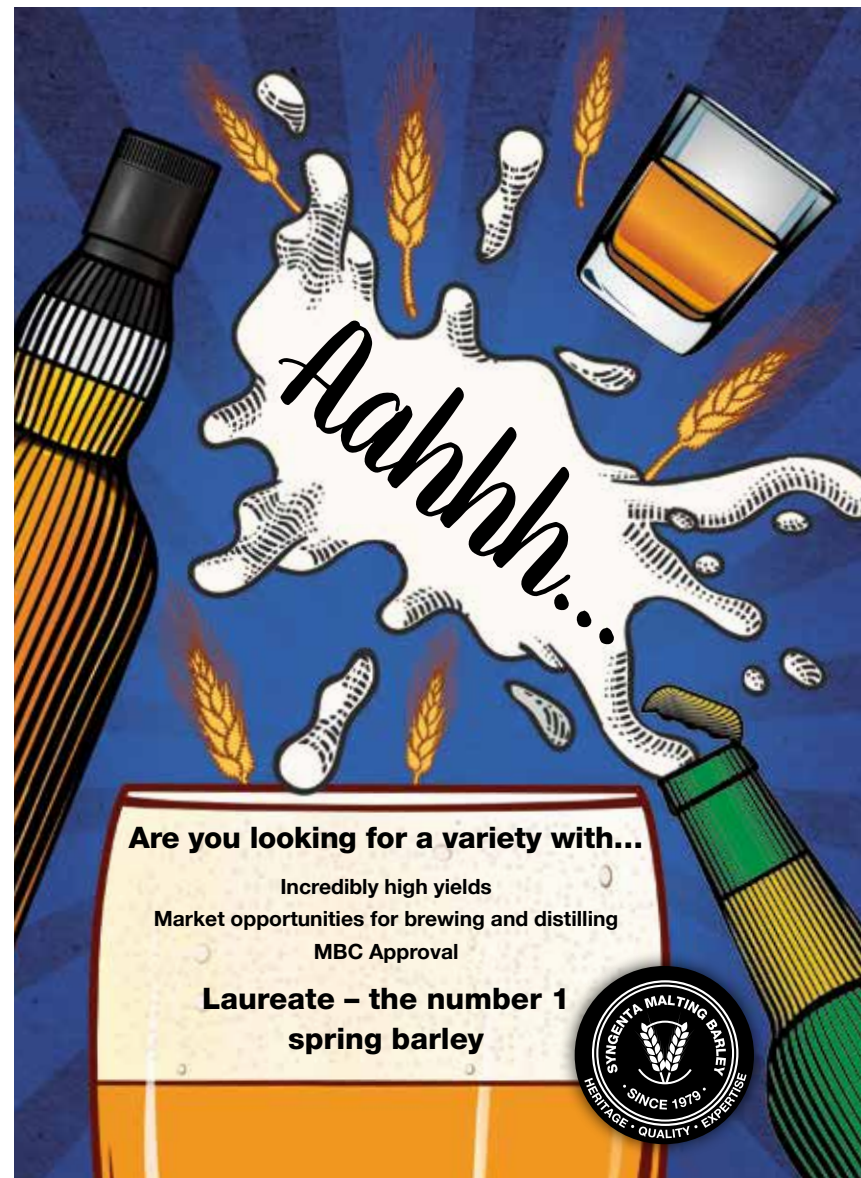
LG DIABLO

The Highest Yielding Recommended Spring Barley
with Full Approval for Malt Distilling and Brewing
by the Malting Barley Committee

@LGSeedsUK   
lgseeds.co.uk/lg-diablo

Limagrain 

Tel: 01472 371471
enquiries@limagrain.co.uk



Are you looking for a variety with...

Incredibly high yields
Market opportunities for brewing and distilling
MBC Approval

**Laureate – the number 1
spring barley**



 **Laureate**
Spring barley

syngenta.

Syngenta UK Ltd. Registered in England No. 849037.
CPC4 Capital Park, Fulbourn, Cambridge CB21 5XE.
Tel: +44 (0) 1223 883400 Technical Enquiries: +44 (0) 800 1696058
Email: customer.services@syngenta.com Website: www.syngenta.co.uk



IF YOU HAVEN'T
HEARD ABOUT
RGT PLANET...

YOU MUST BE FROM
**ANOTHER
UNIVERSE!**

THE WORLD'S NUMBER ONE GROWN SPRING BARLEY,
CONSISTENTLY DEMANDED BY END USERS.



RGT
RGT PLANET
SPRING BARLEY

INTELLIGENT SEED BREEDING
FOR LIKE-MINDED FARMERS.

RGTSEEDS.CO.UK

SY SPLENDOR

Splendid 'til the last drop



The early maturing variety with high yields and
very good quality for the brewing market.



SY Splendor
Spring barley

syngenta®

Syngenta UK Ltd. Registered in England No. 849037.
CPC4 Capital Park, Fulbourn, Cambridge CB21 5XE.
Tel: +44 (0) 1223 883400 Technical Enquiries: +44 (0) 800 1696058
Email: customer.services@syngenta.com Website: www.syngenta.co.uk



WHEAT

AHDB RECOMMENDED LISTS

Spring wheat 2022



	KWS Ladum	KWS Nissaba	Mulika	KWS Cochise
End-use group	UKFM Group 1			
Scope of recommendation	UK	UK	UK	UK
Variety status	NEW	NEW	C	C
UK yield as % control (spring sowing)				
Fungicide-treated (6.8 t/ha)	102	95	94	104
UK yield as % control (autumn sowing)				
Fungicide-treated (9.2 t/ha)	-	[97]	95	101
Grain quality (spring sowing)				
Endosperm texture	Hard	Hard	Hard	Hard
Protein content (%)	13.2	13.5	13.6	13.2
Hagberg Falling Number	324	297	325	243
Specific weight (kg/hl)	78.0	76.4	77.0	78.5
Agronomic features (spring sowing)				
Resistance to lodging with PGR ∞	-	-	-	-
Straw height without PGR (cm)	75	77	78	77
Ripening (+/- Mulika, -ve = earlier)	0	+2	0	+1
Resistance to sprouting ∞	-	-	-	-
Disease resistance				
Mildew (1-9)	[8]	[5]	7	8
Yellow rust (1-9)	6	5	7	4
Brown rust (1-9)	[7]	[9]	[9]	[9]
Septoria tritici (1-9)	[7]	[6]	[6]	[6]
Orange wheat blossom midge	-	R	R	R
Annual treated yield (% control, spring sowing)				
2017 (7.4 t/ha)	-	-	92	106
2018 (5.5 t/ha)	-	-	[94]	[106]
2019 (7.0 t/ha)	103	92	93	105
2020 (6.4 t/ha)	[98]	[96]	[94]	[101]
2021 (7.6 t/ha)	103	96	96	100
Breeder/UK contact				
Breeder	KWS	BA	BA	KWS
UK contact	KWS	BA	Sen	KWS
Status in RL system				
Year first listed	22	22	11	17
RL status	P1	P1	-	-

On the 1-9 scales, high figures indicate that a variety shows the character to a high degree (e.g. high resistance).

UKFM = UK Flour Millers
 UK = Recommended for the UK
 C = Yield control (for the current table)
 * = Variety no longer under test in RL trials
 ∞ = No ratings available
 PGR = Plant growth regulator

[] = Limited data
 R = Believed to be resistant to orange wheat blossom midge (OWBM), but this has not been verified in Recommended List tests
 P1 = First year of recommendation
 P2 = Second year of recommendation

	KWS Giraffe	KWS Chilham	KWS Fikun	WPB Escape	KWS Talisker	Hexham	KWS Kilburn	Average LSD (5%)
End-use group	UKFM Group 2		Hard Group 4					
Scope of recommendation	UK	UK	UK	UK	UK	UK	UK	
Variety status			NEW			C	*	
UK yield as % control (spring sowing)								
Fungicide-treated (6.8 t/ha)	101	100	108	105	104	103	100	3.2
UK yield as % control (autumn sowing)								
Fungicide-treated (9.2 t/ha)	101	99	-	[103]	100	104	[102]	4.5
Grain quality (spring sowing)								
Endosperm texture	Hard	Hard	Hard	Hard	Hard	Hard	Hard	
Protein content (%)	13.5	12.9	12.7	12.7	12.5	12.8	13.1	0.3
Hagberg Falling Number	301	336	218	261	281	274	266	20.7
Specific weight (kg/hl)	79.2	78.2	77.8	76.2	78.7	77.3	75.3	0.7
Agronomic features (spring sowing)								
Resistance to lodging with PGR ∞	-	-	-	-	-	-	-	-
Straw height without PGR (cm)	75	74	79	72	80	77	79	1.9
Ripening (+/- Mulika, -ve = earlier)	+1	0	+2	+2	+1	+2	+2	1.2
Resistance to sprouting ∞	-	-	-	-	-	-	-	-
Disease resistance								
Mildew (1-9)	8	8	[8]	8	8	6	7	1.1
Yellow rust (1-9)	6	7	7	8	9	8	5	0.5
Brown rust (1-9)	[8]	[6]	[8]	[7]	[5]	[9]	[9]	1.8
Septoria tritici (1-9)	[5]	[7]	[6]	[6]	[6]	[7]	[6]	1.1
Orange wheat blossom midge	-	R	-	-	-	-	-	-
Annual treated yield (% control, spring sowing)								
2017 (7.4 t/ha)	[102]	101	-	-	[104]	[102]	101	4.0
2018 (5.5 t/ha)	[106]	[98]	-	[112]	[105]	[100]	[100]	6.1
2019 (7.0 t/ha)	100	96	108	104	103	103	98	4.1
2020 (6.4 t/ha)	[97]	[99]	[108]	[103]	[102]	[105]	[103]	4.2
2021 (7.6 t/ha)	102	103	106	[103]	105	105	99	4.0
Breeder/UK contact								
Breeder	KWS	KWS	KWS	WPB	KWS	KWS	KWS	
UK contact	KWS	KWS	KWS	LSPB	KWS	Sen	KWS	
Status in RL system								
Year first listed	20	17	22	21	19	19	14	
RL status	-	-	P1	P2	-	-	*	

BA = Blackman Agriculture
 KWS = KWS UK (kws-uk.com)
 LSPB = LS Plant Breeding (lsnb.eu)
 Sen = Senova (senova.uk.com)
 WPB = Wiersum Plant Breeding

LSD = Least significant difference
 Average LSD (5%): Varieties that are more than one LSD apart are significantly different at the 95% confidence level

On the 1-9 scales, high figures indicate that a variety shows the character to a high degree (e.g. resistance)

WHEAT

MULIKA SPRING WHEAT

Mulika (Paragon x (Tybalt x Robigus)) has been the only Group 1 recommended variety since 2011 until this year. It has a good protein content, Hagberg and specific weight. Mulika has a solid disease package including resistance to orange wheat blossom midge. However, it is starting to lag behind in yield in comparison to some newer varieties.

KWS COCHISE

KWS Cochise (Ashby x Lapis) is one of the highest yielding spring wheat on the recommended list with 10% higher yield than Mulika. It is a Group 2 variety, with good grain quality, a high specific weight of 78.5 kg/hl and good protein content. KWS Cochise has a high untreated yield of 82%, reflecting a good all round disease profile, with resistance to orange wheat blossom midge.

hexham SPRING WHEAT

Hexham (KWS Westfield x KWS Flint) is a high yielding group 4 feed wheat with a good quality grain but is slightly later to mature. It has stiff straw and good disease resistance of 8 for yellow rust and 7 for Septoria Tritici.



High yielding spring breadmaker with great market opportunities

KWS COCHISE

- Very high yielding spring wheat
- Group 2 with excellent market opportunities
- Good yield potential with OWBM resistance



KWS UK LTD

56 Church Street
Thriplow
Royston
SG8 7RE

+44 (0) 1763 207300
@kwsukltd
ukmarketing@kws.com
www.kws-uk.com

SEEDING
THE FUTURE
SINCE 1856





hexham

SPRING WHEAT



A new outlook for spring wheat

Feed variety **Hexham** excels when autumn and spring sown and its high yields, great disease resistance and flexible drilling date make it an excellent option across the country.



Tel 01223 890777 • Email info@senova.uk.com • [@SenovaLtd](https://twitter.com/SenovaLtd)
www.senova.uk.com

OATS

CANYON **Canyon** (99/126 x Loch 1177) has been on the recommended list for 10 years with consistent yields. It has excellent resistance to mildew and has a good specific weight but is susceptible to crown rust. It is the favoured Spring oat variety from millers.

WPB ELYANN **WPB Elyann** (Ivory x LW 00W035-01) x LW97W020-01) is a relatively new variety on the AHDB recommended list which is stiff straw, early to ripen and has an excellent kernel content. It has moderate disease resistance.

WPB ISABEL **WPB Isabel** (LW 03W0383-06 x Husky) is a relatively new variety on the AHDB recommended list and is the second highest yielding variety at 105% of controls. It has the best specific weight on the list of 54.5 kg/hl. It has a high kernel content and low screenings and is liked by the millers.



LYNX

Lynx – One of the top yielding spring bean varieties at 106% of controls, with very good downy mildew resistance. It is slightly later to mature than Fuego with a medium sized seed, suitable for the premium export market.



Fuego – A very popular spring bean variety with a yield of 97%. It is highly regarded by growers for its large seed size and colour. Medium straw length and very good standing ability as well as early maturity. It has a score of 5 for downy mildew resistance. It's large seed size makes it a popular variety for the human consumption market.



LYNX SPRING BEAN

**Don't let disease
sneak up on your yields**

LYNX Spring Bean is the highest yielding variety with a high Downy mildew resistance and high standing power.

- Highest Yielding on the PGRO DL
- Very high resistance to Downy mildew
- Consistent performance over many seasons



www.lspb.eu/pulses

North Barn, Manor Farm, Milton Road,
Impington, Cambridge, CB24 9NG

Tel: +44 (0) 1223 236808
www.lspb.eu



ESTABLISH A STRONG AND RESILIENT CROP WITH VIBRANCE® DUO THIS SEASON

PROVEN TO:

- ▶ **IMPROVE ESTABLISHMENT**
- ▶ **INCREASE ROOTING**
- ▶ **PROTECT YIELD**

Based on trials from 2018-2020

**VIBRANCE®
EFFECT**

**VISIT OUR WEBSITE
TO SEE THE
VIBRANCE EFFECT™**

www.syngenta.co.uk

**ROOTING
POWER™**



Vibrance® Duo **syngenta.**

Syngenta UK Ltd. Registered in England No. 849037. CPC4 Capital Park, Fulbourn, Cambridge CB21 5XE.
Tel: 01223 883400 Fax: 01223 882195 Technical Enquiries Tel: 0800 169 6058 Email: customer.services@syngenta.com Website: www.syngenta.co.uk

VIBRANCE® Duo, ROOTING POWER™ and the SYNGENTA logo are Trademarks of a Syngenta Group Company. VIBRANCE® Duo (MAPP 17838) contains fludioxonil and sedaxane. Use plant protection products safely. Always read the label and product information before use. For further product information including warning phrases and symbols refer to www.syngenta.co.uk November 2021. 11806

SEED DRESSINGS FOR SPRING 2022

Vibrance Duo – Vibrance Duo is now approved for barley. Many growers have seen the benefits of this dressing on winter cereals over the last couple of seasons. It is worth considering on land with difficult seed beds as well as fields where grass has recently been in the rotation after the loss of Austral Plus for wireworm control. It is an ideal dressing to boost early root growth, which combined with its excellent disease control, helps drive the crop to reach its full yield potential.



Spring barley, spring wheat and spring oats. Vibrance Duo is a fungicide SDHI-based (succinate dehydrogenase inhibitors) seed treatment to aid plant establishment and rooting. Vibrance Duo offers an opportunity to give crops, the best start with outstanding control of key diseases, enhanced rooting and rapid crop establishment.

Benefits include:

- Improved scavenging for soil moisture
- Improved uptake of nutrients
- Better resilience – to stress, pests and diseases
- Controls a broad spectrum of diseases that threaten crop establishment including Fusarium, microdochium, bunt, loose smut and rhizoctonia
- Faster emergence
- SDHI sprays can still be applied – sedaxane forms a protective zone around the seed, root and stem base
- Low dust-off
- Compatible to be co-applied with Latitude

For further information, please visit the Syngenta website:

www.syngenta.co.uk/vibrance-duo



Redigo Pro - Spring wheat, spring oats and barley, rye and triticale.

Active substances: Prothiconazole and tebuconazole. Its two advanced actives work together by acting inside the germinating seedlings.

Broad –spectrum control:

- Septoria – seedling blight and stem base browning : improves the health of stem base by reducing symptoms caused by *Microdochium nivale* and *Fusarium SPP*
- Loose smut in winter & spring barley
- Seed-and soil-borne bunt
- Blue mould
- Ergot: reduces germination of treated ergot particles
- Leaf stripe – partial control of *Pyrenophora Graminea* in winter and spring barley (not crops grown for multiplication)

For more information on Redigo Pro, please see www.bayercropscience.co.uk



NUTRITIONAL SEED DRESSINGS

FEEDING CROPS FOR PERFORMANCE

Seed dressings are an important tool to aid crop establishment and reduce early season nutrient deficiencies, especially where seedbeds are challenging.

Where do nutritional seed dressings help?

- Where soil or leaf analysis has shown deficiency
- High soil pH
- Soils with high organic matter/receive regular manure applications
- Sandy soils
- Cold/Wet soils

Early season nutrient roles within plants

- Phosphate - Key for root and shoot development.
- Manganese- Essential for chlorophyll synthesis and lignin production.
- Copper – Lignin synthesis and plant respiration.
- Zinc – responsible for the utilisation of auxins which regulate plant growth and helps with disease tolerance.





Kick Off – suitable for all cereals, pulses, oilseed rape and maize.

Kick Off Seed Treatment Analysis

- 180g/l – Phosphate/Phosphite
- 80g/l – Manganese
- 16g/l – Zinc
- 20g/l – Nitrogen
- 40g/l – Potassium

Kick Off is a phosphate/phosphite based seed treatment which promotes both root and shoot development to aid plant emergence and establishment. Kick Off is suitable for all soil types and is particularly useful where seedbed conditions are challenging.

As well as seedbed conditions, soil pH has a big impact on nutrient availability. For example, the Yorkshire Wolds are renowned for their calcareous, chalky soils and naturally have a high soil pH. Subsequently, nutrients such as phosphate, manganese, copper and zinc are easily locked up from plant available forms, even if soil analysis results show adequate indices.

Applying these nutrients to your seed helps to eliminate early season deficiency, enhance plant emergence and build yield potential.



Manganese Trio – suitable for all cereals, pulses, oilseed rape and maize.

Treating seed with Manganese is the most effective way to eliminate cereals from early season deficiency to aid plant emergence and crop establishment. A very useful dressing, particularly on lighter and/or soils naturally high in PH where deficiency is common..

Manganese Trio Seed Treatment Analysis

- 10% Soluble Manganese (Mn)
- 16.3% Sulphur Trioxide
- 1.0% Copper (Cu)
- 0.5% Zinc (Zn)



Zest – a new phosphite based seed treatment for spring beans. Similar to Kick Off in cereals, it is a phosphite based dressing to aid early rooting. This product contains phosphite plus potassium, sulphur, manganese, zinc, amino acids and molybdenum – an important nutrient for successful pollination.

Please do not hesitate in contacting Mortimers to arrange a visit to your farm to discuss individual requirements / objectives. Using the best seed treatment available is a sound investment, especially on varieties with specific weaknesses.

GAME COVER AND ENVIRONMENTAL MIXTURES AND MAIZE

We sell a full range of game cover, environmental mixtures and grass seed from a range of suppliers. All can be bought as ready-made mixtures, straights, or mixed to order to meet your needs.

With more farms now part of the countryside stewardship schemes as we transition towards the ELMS roll out in 2024, the small seeds sector of the industry is a rapidly growing market with lots of suppliers. It is our aim to source mixes from those suppliers who grow seed to the highest of standards to ensure successful establishment with good vigour and purity. With a range of mixtures to choose from, please contact us to discuss the options so that we can advise the appropriate mixes for your requirements.

WHICH GAMECOVER MIXES COMPLY WITH THE AB9 WILD BIRD OPTION FOR COUNTRYSIDE STEWARDSHIP?

Jack Russell (1 year mix):

Spring Triticale
Millet Blend
Oilseed Radish
Grain
Sorghum
Sunflower
Linseed

Linnet (1-2 year mix):

Kale
Oilseed Rape
Red & White Millet
Linseed
Mustard
Oilseed Radish

Bunting (1-year mix):

Triticale
Spring wheat
Spring Barley
Quinoa
Red & White Millet
Oilseed Radish

PARTRIDGE COVER OPTIONS?

Pro Driver:

Kale
Mustard
Linseed
Quinoa
Golden Retriever

A thinner canopy for easier bird access, more suited for partridges with huge seed shed potential.

WHICH MIX WILL PROVIDE A WARM COVER ON EXPOSED SITES?

Labrador Mix (2-year cover):

Spring Triticale
Mustard
Kale
Linseed
Quinoa

HERBICIDE TOLERANT MIX OPTIONS:

Stomp Aqua Tolerant:

Jack Russell
Golden Retriever

Butisan 'S' Tolerant:

Cocker

Please be aware a derogation may be required before spraying.

GAMECOVER MIX OPTIONS

2-YEAR AB9 WILD BIRD MIX OPTIONS?

Bird Feeder:

Kale
Sunflower
Linseed
Oilseed Radish
Mustard
Millet Blend

2-year Winter Bird Food:

Spring
Triticale
Quinoa
Stubble
Turnip
Kale
Linseed
Oilseed
Radish

MIX SUITED TO AREAS THAT CAN'T BE SOWN ANNUALLY...

Springer:

Perennial
Chicory
Spring
Triticale

Triticale provides feed in the first year and then the chicory will give cover and feed for the second and third years.

Very drought tolerant and good driving cover.

WHAT CAN I PUT IN LATER IN THE SEASON THAT WILL ESTABLISH QUICKLY?

Spaniel:

Carbon
Mustard
Interval Rape/ Kale
Oilseed Radish

Ideal choice to fill in patchy areas or to provide a fast-growing cover later in the season.

Drought tolerant for summer sowing.

Can be broadcast into a cereal stubble.

2-YEAR GAME COVER MIX OPTIONS:

Setter:

Phacelia
Sweet Clover
Millet Blend
Maize
Mustard
Keeper Kale
Buckwheat
Sunflower

Labrador:

See above for details.

Golden Retriever:

Dwarf Sorghum
Dwarf Sunflowers
Millet Blend
Oilseed Radish

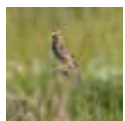
Cocker:

Caledonian Kale
Mustard
Oilseed Radish
Linseed

ENVIRONMENTAL MIXES



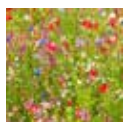
Bumblebird Mixes: Designed to benefit insects during summer months and wild birds in autumn. Autumn sown.



Wild Bird Mixes: Mixes specifically designed to provide various food sources for seed-eating birds throughout the year. Spring sown.



Pollen and Nectar Mixes: Designed to benefit butterflies and bees. Spring sown.

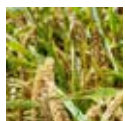


Wild Flower Meadow Mixes: Mixtures of native flower and grass species to help re-instate the decline in native plant populations and meadows. Provides excellent pollen and nectar sources for birds, butterflies and mammals. Spring sown.

GAMECOVER STRAIGHTS



Game Maize: Quality forage maize selected carefully to provide full cover throughout the season. Winter hardy and good standing power. Drill when soil temperatures are above 10°C into non-compacted seedbeds.



Millet: Millet provides an excellent feed source to keep game interested in cover. Often used in blocks as flushing points. White and Red millet are often used as a blend to spread shed of seed due to difference in maturity dates. Millet is an ideal warm feeding area partner to both maize and sorghum in covers.



Sorghum: Provides warmth to covers to help hold birds. Very effective when sown adjacent to maize strips – excellent flushing points. Can make excellent controlled driving cover. Soil temperatures need to be above 14°C before sowing.



Quinoa: Provides warm cover throughout the season. Large seed shed, high in protein – particularly later in the season. Often sown with Kale to give a good 2-year cover.



Sunflower: Used as part of a mix or on its own to provide a plentiful seed source October onwards. Good standing power and attracts beneficials when flowering. Sow when soil temperatures have reached at least 10°C.



Mustard: An excellent source of early season cover – usually used as part of a mix. Wide drilling window from spring through to late September. Mustard makes a good autumn 'Rescue Mix' when sown with other species such as fodder radish, stubble turnips and forage rape. Not very winter hardy (Brown Mustard will maintain cover until February).



Kale: Very winter hardy and will provide cover for 2 years. Gives warmth to covers in exposed sites. Excellent feed source for livestock. Several varieties available.



Phacelia: Fast growing and excellent provider of pollen and nectar for beneficials. Used as part of an overall game cover mix. Good catch/cover crop due to its weed suppression and ability to lift and hold nitrogen in the soil. Phacelia will readily re-seed itself.



Chicory: Chicory is a perennial crop that provides excellent cover from year 2 onwards. Best used as part of a longer term mix. Its deep roots help to improve soil structure and is very drought tolerant. Don't sow on wet ground.



Carbon: Carbon is a Kale x Mustard cross which is ideal for producing a good cover in short period of time. Best sown June/July for full cover by November. Can be sown into cereal stubble as a rescue mix or to fill in patchy areas.



Interval: Interval is a Rape x Kale cross, similar to Carbon for a fast establishing and vigorous cover. Very winter hardy for full season cover. Can be sown into cereal stubble as a rescue mix or to fill in patchy areas.

OTHER FEED AND GRASS MIXTURES



Fodder Beet: Fantastic feed source for livestock throughout autumn and winter. Winter hardy. Several varieties available.



Swede: Extremely palatable, high energy winter feed source. Suitable for a wide range of soils. Several varieties available.



Stubble Turnip: Fast growing excellent autumn/winter feed source. Several varieties available.



Grass and Herbal Ley Mixtures: various mixes available depending on use.

Please ring for details of all mixes.

FERTILISERS

To support your growing crops we sell a full range of fertilisers including:

- Nitrogen and Compounds
- Urea Blends
- NPK Blends
- Straights Liquids



USEFUL CONTACTS

Simon Minns **07702 677375**

Stuart Rowley **07887 754790**

Jim Wraith **07739 556345**

Georgina Beevers **07807 015729**

Lucy Rowley **07932 646284**

David Milns **07831 094211**

Barry Froggatt **07713 633782**

Trevor Lakin **07754 102755**



Mortimers
13 Pexton Road
Kelleythorpe Industrial Estate
Driffeld
East Yorkshire
YO25 9DJ

01377 253314
www.jamesmortimer.co.uk

